



SM

PRINCIPAL

Infrastructure

Architecture ♦ Engineering ♦ Construction Management



PRINCIPAL *Engineering, Inc.*



“To Exceed Client Expectations; That’s our Mission.”

Henry I. DiFranco, Jr., PE, MBA
President

Serving the Gulf Coast Region

LA | MS | AL | GA | FL | AR | TX



COMPANY PROFILE

PRINCIPAL Infrastructure is a full service consulting architecture, engineering and construction management firm serving public and private market sectors across the Gulf Coast. *We are licensed Architects; professional Civil, Environmental, Structural, Mechanical and Electrical Engineers; Construction Managers; Construction Inspectors and Program Managers.*

Established in 2004, we rapidly grew into a well respected firm with a reputation for providing a quality product, delivered within the client's determined schedule and budget. The Principal Infrastructure Team takes pride in developing innovative solutions to meet the challenges presented by our nation's aging infrastructure needs. Our staff has a diverse background; having successfully completed an array of projects at every phase; from planning to close out. We employ three key aspects to our success: technical proficiency, proven management procedures and communication. We provide each and every client with personal attention; with communication as the key to developing a successful project while implementing tested management procedures throughout every phase of the project.

We use state-of-the-art computer technology in architecture and engineering design and document production. These tools have enabled delivery of high quality products to our clients—within budget and on schedule. Our team takes pride in their track record and strives daily to uphold our Mission "**To Exceed Client Expectations**".



Above: Ingram Industries Office Development Project in Reserve, LA.

PUBLIC CLIENTS:

*City of Mandeville
City of New Orleans
City of Slidell
City of Covington
City of Kenner
S&WB of New Orleans
USACE
NASA
LA DOTD
Jefferson Parish
St. Tammany Parish
St. John the Baptist Parish
St. Bernard Parish
St. Charles Parish
Jefferson Parish Public Schools
Housing Authority of Jefferson Parish*

PRIVATE CLIENTS:

*Occidental Chemical Corp
Landcraft Homes, LLC
Boyd Gaming Corp
Crown Castle International
Ingram Barge Company
Camp, Dresser & McKee, Inc.
URS Corporation
KB Home, Inc.
Karr Builders, LLC*

"Our expectations were exceeded. They produced a quality product while responding in a professional manner to the needs of my staff".

V.J. ST. PIERRE
PRESIDENT
ST. CHARLES PARISH

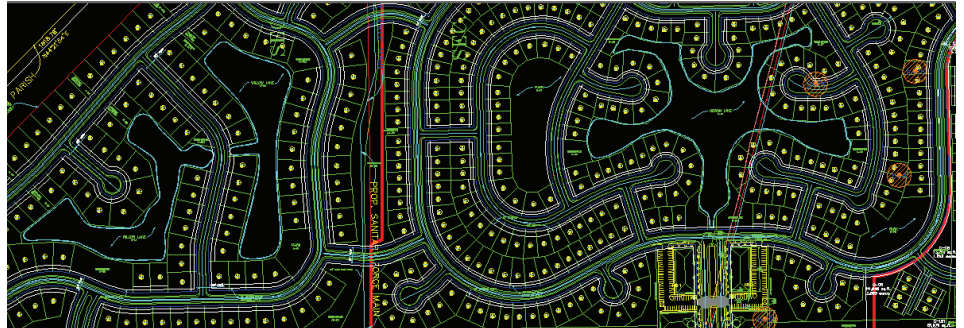


CAPABILITIES

CIVIL



- **Transportation and Roadway** - Divided highways, local streets, pavement rehab, capacity analysis, traffic engineering.
- **Hydraulic/Hydrologic Modeling & Analysis** - Flood elevation determination, canal and conveyance improvements, drainage master planning, FEMA flood map amendment requests.
- **Drainage Systems** - Open channel, subsurface conveyance systems, pump stations.
- **Wastewater Collection & Treatment** - Gravity collection, pumping stations & force mains, sewer rehabilitation, treatment plants & plant expansion.
- **Water Distribution & Treatment** - Transmission line, pumping, storage tanks & towers, treatment plants.
- **Site Planning** - Residential & commercial development; planning, drainage, sewerage and water systems and permitting.



“Principal Engineering responded quickly, under a demanding schedule to complete our Federal Stimulus ARRA roadway improvement project, achieving DOTD approval by our suspense date....They delivered”.

KEVIN DAVIS
PRESIDENT
ST.TAMMANY PARISH

ENVIRONMENTAL

- **Environmental Site Assessments** - PH 1 & 2 ESA, Environmental Impact Statements (EIS) and HUD Reports.
- **Wetland Delineations & Jurisdictional Determinations** - Residential & Commercial development and project specific requests.
- **Permitting** - USACE 404, LA DNR Coastal Use, DEQ SWPPP & Discharge



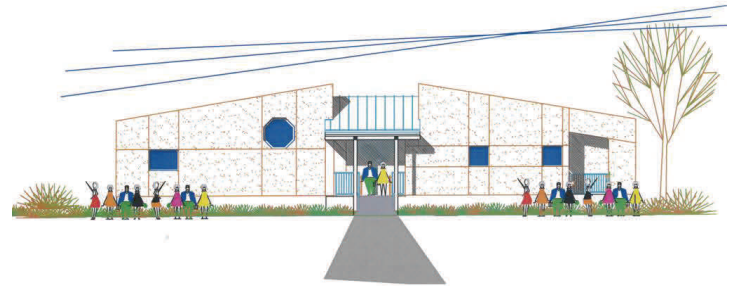
STRUCTURAL

- **Building, Industrial, & Tower Foundations** - Pile/shaft or shallow solutions for structures, equipment, tanks, and telecommunication towers
- **Bridges & Elevated Platforms** - Small and large span bridges and concrete and steel platforms
- **Civil Works Structures** - Retaining walls, box culverts, wet wells, underground vaults, treatment plants, pump stations
- **Residential & Commercial Building** - Design of new structures, additions, evaluation and repair; concrete, steel and timber frame



MECHANICAL & ELECTRICAL

- **Public Works Projects** - Recreation, Pump Stations, Treatment Plants, etc.
- **Government & Commercial Buildings** - Complete Mechanical, Electrical and Plumbing (MEP) Design



ARCHITECTURE

- **Planning** - Interior planning, developments, master plans
- **Public Facilities** - Libraries, Office Buildings, etc.
- **Recreation Facilities**- Gymnasiums, Ball Parks, Gazebos
- **Education** - Complete project programming for classroom and administrative facilities; renovations, redevelopment and new facilities.
- **Commercial & Residential Buildings** - Renovations, change in use, redevelopment and new construction

"Principal Engineering has successfully completed numerous projects for our Parish and their continued work is a testament to their success; I recommend them for your next project".

NATALIE ROBOTOM
PRESIDENT
ST. JOHN PARISH

CONSTRUCTION & PROGRAM MANAGEMENT

- **Construction Administration** - Manage all aspects of the construction contract for Owner; meetings, RFI's, Shop Drawings, Submittals, Pay Requests, Plan Reviews, QA/QC, etc.
- **Resident Inspection** - On-Site representation for QA/QC, ensure contractor compliance, payment items/quantities, etc.
- **Program Management** - Owner's representative throughout all phases of public project planning, design and construction.



Photographs, clockwise from top right: St. John Parish Woodland Dr. Bridge Replacement, Live Oak Kindergarten Building for Jefferson Parish Public Schools, Pump Station Safe House Construction Administration and Inspection for Jefferson Parish, , Typical S. Louisiana Marsh Environment (photo by NOAA), Audubon Estates Subdivision Layout for KB Home, N. Kelly Lane Drainage Upgrades in Jefferson Parish.



CORE VALUES

“Their assistance on our land acquisition project helped Ingram make informed decisions about our commercial development. They responded professionally to our needs and their service was exceptional”

PETE CIARAMITARO
INGRAM BARGE

“Principal Engineering’s commitment of client satisfaction and professionalism is evident in their work on our recovery projects. I recommend Principal Engineering for your next infrastructure project”.

DAVID PERALTA
PRESIDENT
ST. BERNARD PARISH



MISSION

“To Exceed Client Expectations”

VISION

Consistently applying our engineering and project management expertise to provide a quality product and service, delivered on time, within budget, in the best interest, and to the total satisfaction of our Clients.

GOAL

To provide a challenging and rewarding work environment in which the talents of our people contribute to innovative and technically sound designs which:

- Are Constructed in a Safe, Timely and Cost Effective Manner
- Are Reliable throughout the Intended Design Life
- Are Constructed to Safeguard Life, Health and Property
- Are Constructed within the Established Budget

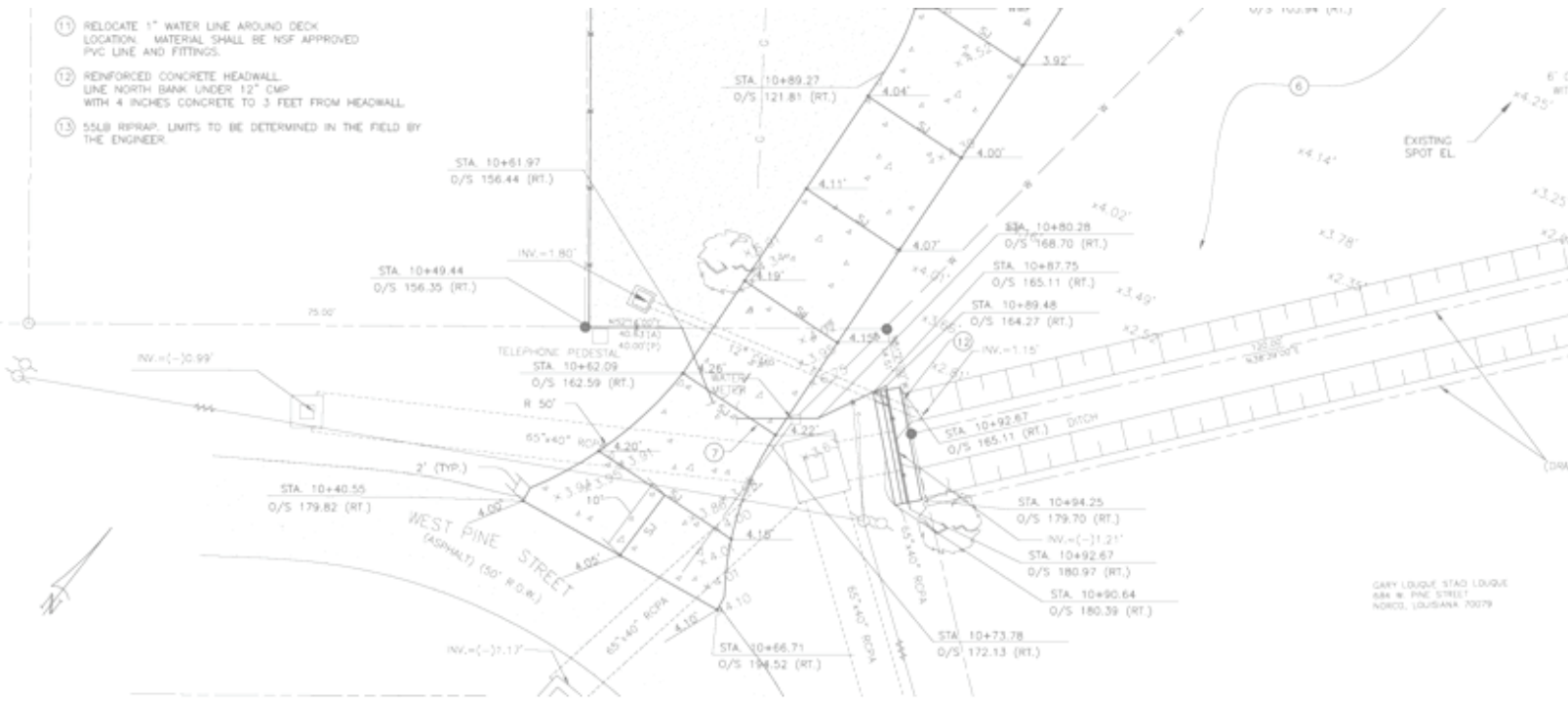
COMMITMENT

Our commitment is simple; to serve our Clients with a high level of integrity and excellence; to provide the highest quality of personalized, professional service using state of the art technology; and to produce the best possible product in a cost efficient and timely manner. We are committed to assisting our Clients by offering innovative solutions in planning, design, construction and/or restoration for the infrastructure under their jurisdiction, and to provide professional engineering services to safeguard life, health and property of clients, their employees, the customers they serve, and the public at large. **PRINCIPAL Infrastructure** is at your service and we appreciate the opportunity.

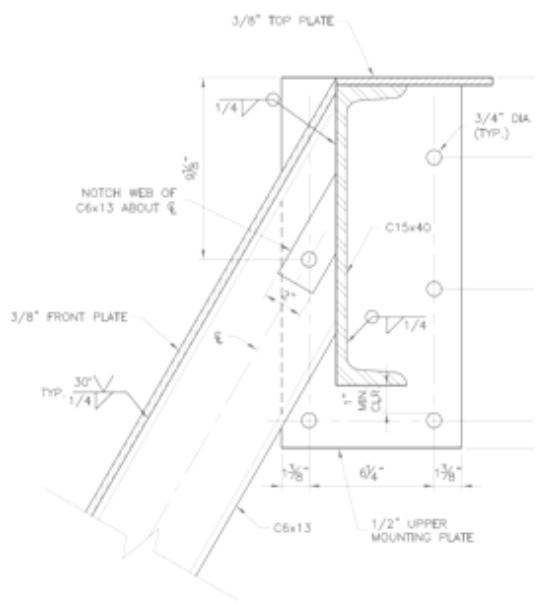
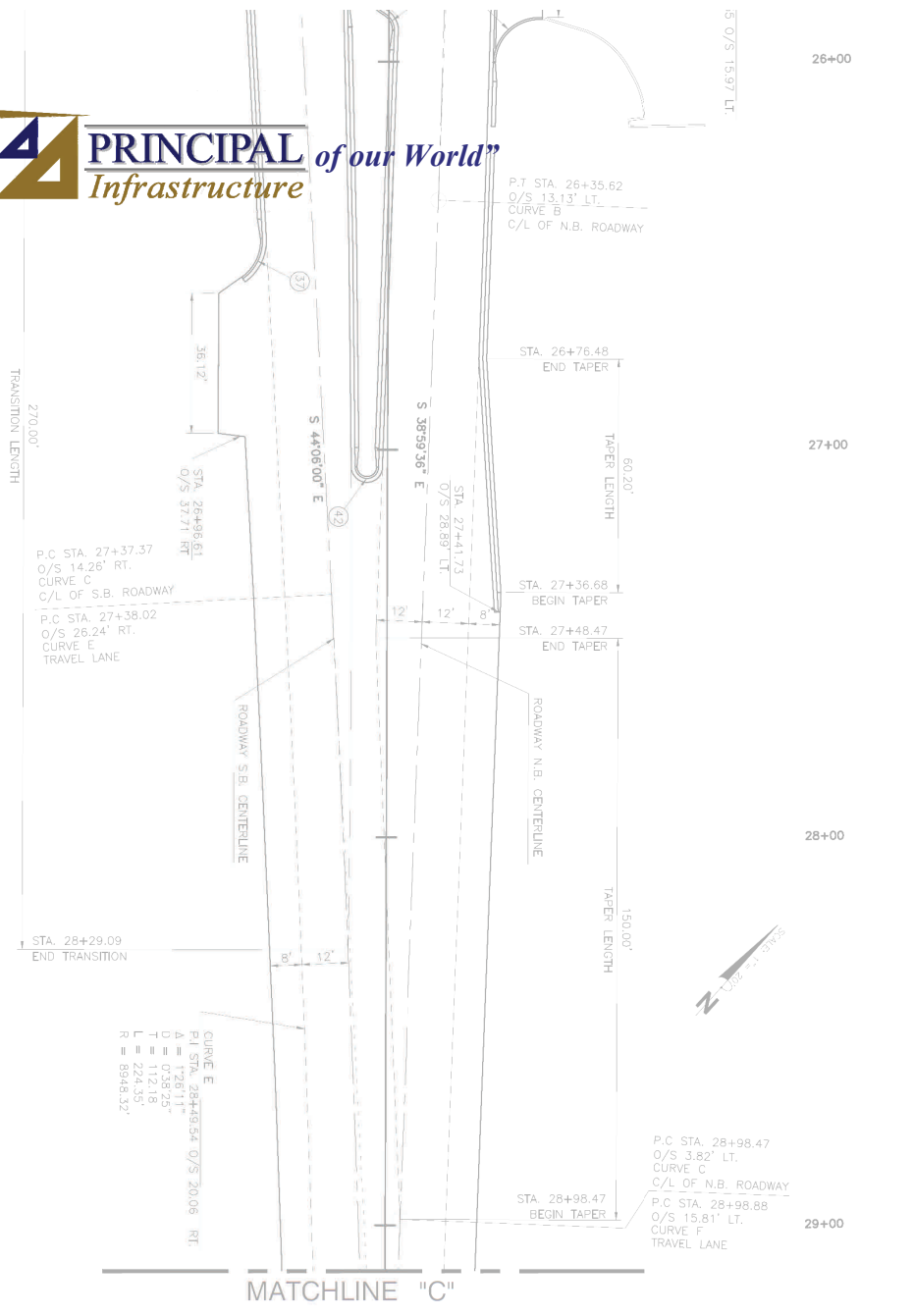
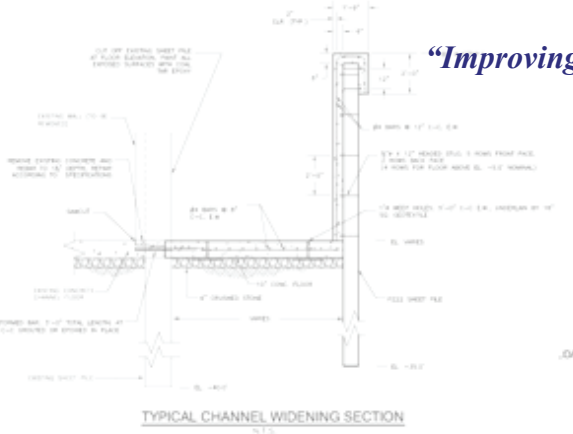
To find out more about how **PRINCIPAL Infrastructure** can assist you in your next Architecture or Engineering project, please contact:

Henry I. DiFranco, Jr., P.E.
Office: 985.624.5001

- 11 RELOCATE 1" WATER LINE AROUND DECK LOCATION. MATERIAL SHALL BE NSF APPROVED PVC LINE AND FITTINGS.
- 12 REINFORCED CONCRETE HEADWALL, LINE NORTH BANK UNDER 12" CMP WITH 4 INCHES CONCRETE TO 3 FEET FROM HEADWALL.
- 13 SLSB BRISAP LIMITS TO BE DETERMINED IN THE FIELD BY THE ENGINEER.



- 1. EXISTING CHANNEL FLOOR ELEVATION SHOWN, WITH NEW FLOOR TO EXISTING ELEVATION.
- 2. THE CHANNEL CHANNEL FLOOR ELEVATION FROM STA 10+40.55 TO STA 10+49.44 IS THE EXISTING SHEET PILE WALL. THE NEW CHANNEL FLOOR SHALL BE REINFORCED CONCRETE WITH 4" DIA. REBAR. THE CHANNEL FLOOR SHALL BE 12" THICK. THE CHANNEL FLOOR SHALL BE 12" THICK. THE CHANNEL FLOOR SHALL BE 12" THICK.



CURVE E
 P1 STA. 28+49.54 O/S 20.06 RT.
 A = 128.11'
 D = 0.58125
 L = 224.35'
 R = 8948.32'

P.C. STA. 28+98.47
 O/S 3.82' LT.
 CURVE C
 C/L OF N.B. ROADWAY
 P.C. STA. 28+98.88
 O/S 15.81' LT.
 CURVE F
 TRAVEL LANE

MATCHLINE "C"



1011 N. Causeway Blvd., Suite 19 ♦ Mandeville, La. 70471 ♦ (Corporate Office)
3201 St. Charles Ave., Suite 206 ♦ New Orleans, La. 70115 ♦ (Branch Office)
Ph: (985) 624-5001 ♦ info@pi-aec.com ♦ Fx: (985) 624-5303

www.pi-aec.com